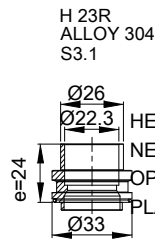
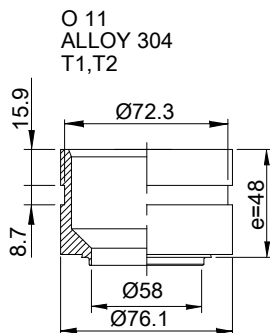
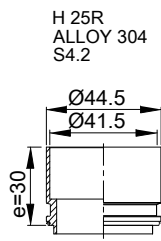
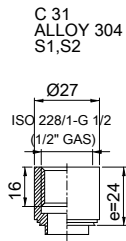
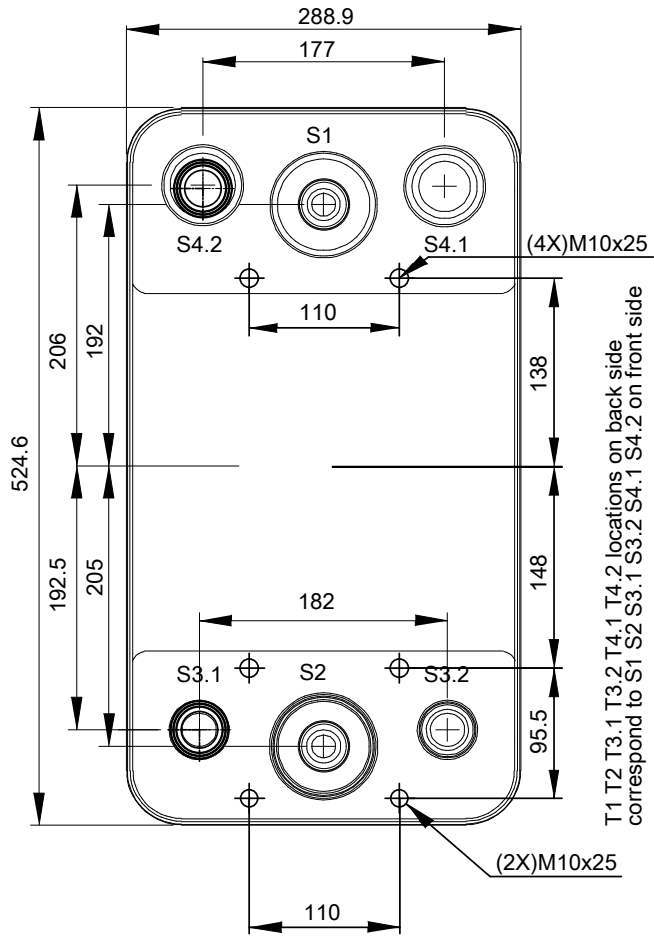
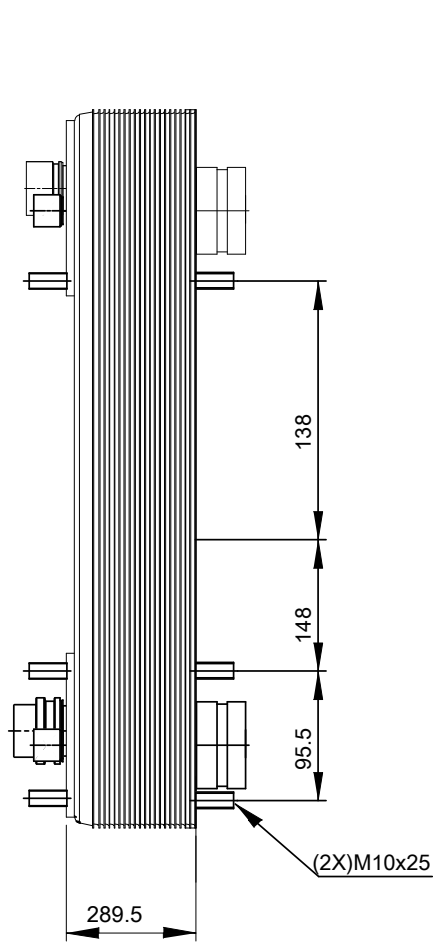


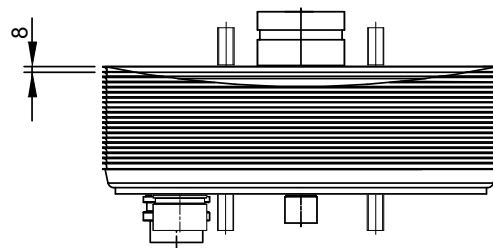
Note that all unique customer requirements (i.e tolerance) need to be verified thru Alfa Laval.



HEATING SURFACE m²
NETWEIGHT 62.1 kg
OPERATING WEIGHT kg
PLATE MATERIAL ALLOY 316
PLATE GROUPING 1*64AHR/1*65AHB



T1 T2 T3.1 T3.2 T4.1 T4.2 locations on back side correspond to S1 S2 S3.1 S3.2 S4.1 S4.2 on front side



ALL DIMENSIONS IN MILLIMETERS

SIDE	MEDIA	INLET	TEMP.	OUTLET	TEMP.	FLOW RATE	PRESSURE DROP	LIQUID VOL.
1	Water	T1	°C	T2	°C	kg/h	kPa	17.6 dm ³
2	R134a	S3.1	°C	S4.2	°C	kg/h	kPa	15.4 dm ³

PRESSURE VESSEL APPROVAL

PED

ACH240EQ-130AH-F (3075057655)

www.alfalaval.com

CUSTOMER NAME / REF. NO.

TOTAL LENGTH 363 mm
TOTAL WIDTH 289 mm
TOTAL HEIGHT 525 mm

COMPANY / REF.
EKO ELEKTROFRIGO DOO BEOGRAD
Usce



10/29/2022
REV 0