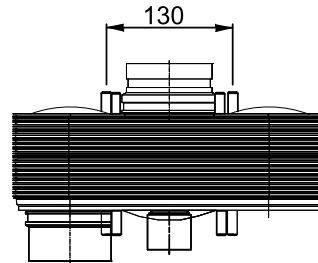
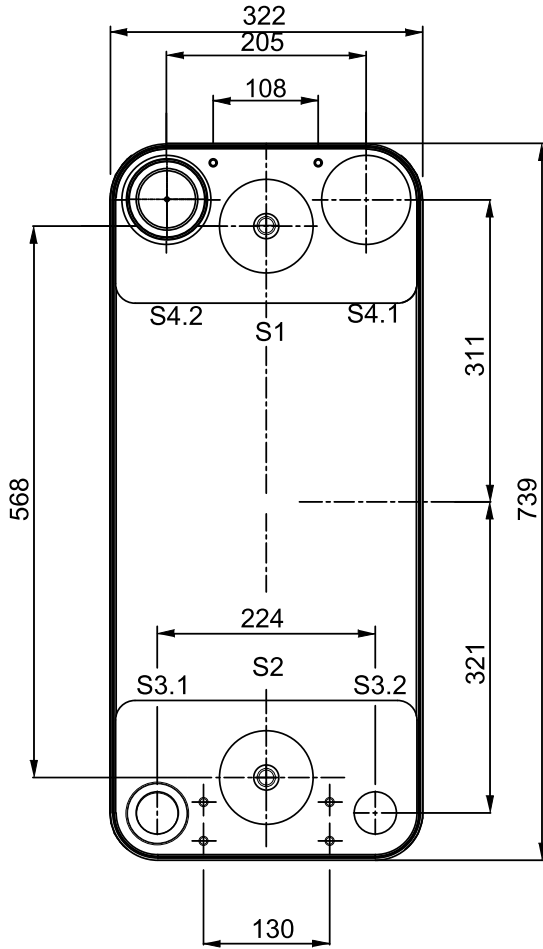
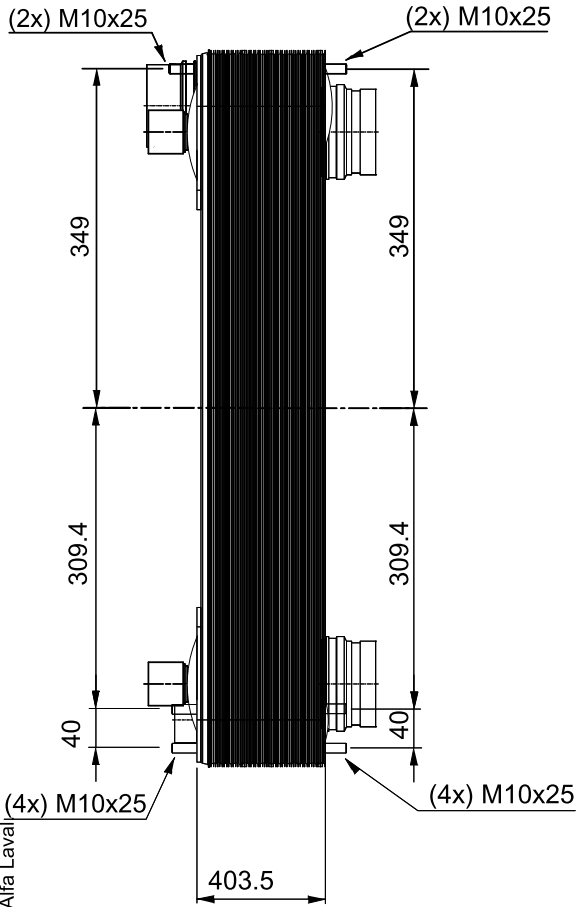


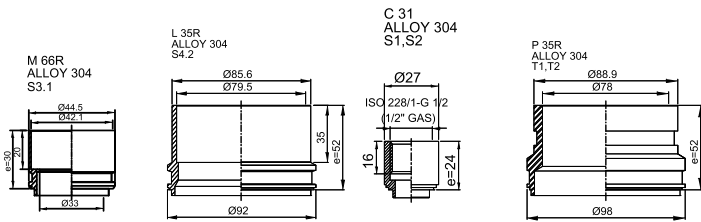
Note that all unique customer requirements (i.e tolerance) need to be verified thru Alfa Laval



T1 T2 T3.1 T3.2 T4.1 T4.2 locations on back side correspond to S1 S2 S3.1 S3.2 S4.1 S4.2 on front side

ALL DIMENSIONS IN MILLIMETERS

SIDE	MEDIA	INLET	TEMP.	OUTLET	TEMP.	FLOW RATE	PRESSURE DROP	LIQUID VOL.
1	Water	T1	°C	T2	°C	kg/h	kPa	35.3 dm <sup>3</sup>
2	R134a	S3.1	°C	S4.2	°C	kg/h	kPa	37.0 dm <sup>3</sup>



HEATING SURFACE m<sup>2</sup>  
 NETWEIGHT 138.2 kg  
 OPERATING WEIGHT kg  
 PLATE MATERIAL ALLOY 316  
 PLATE GROUPING 1\*74HR/1\*75HB

PRESSURE VESSEL APPROVAL PED



AC-500EQ-150H-F (3287076466)

www.alfalaval.com

CUSTOMER NAME / REF. NO.

COMPANY / REF.  
 EKO ELEKTROPRIGODNO BEograd

TOTAL LENGTH 506 mm  
 TOTAL WIDTH 322 mm  
 TOTAL HEIGHT 739 mm