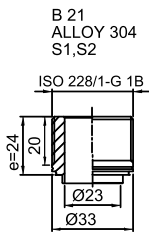
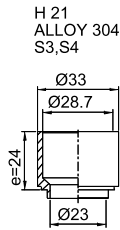


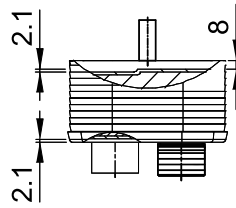
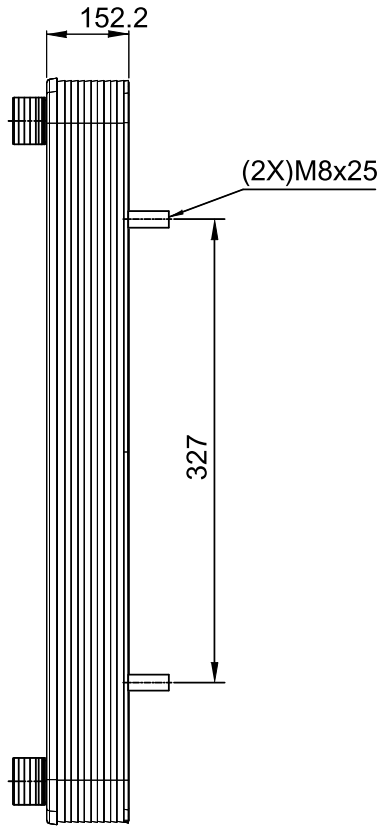
Note that all unique customer requirements (i.e tolerance) need to be verified thru Alfa Laval.



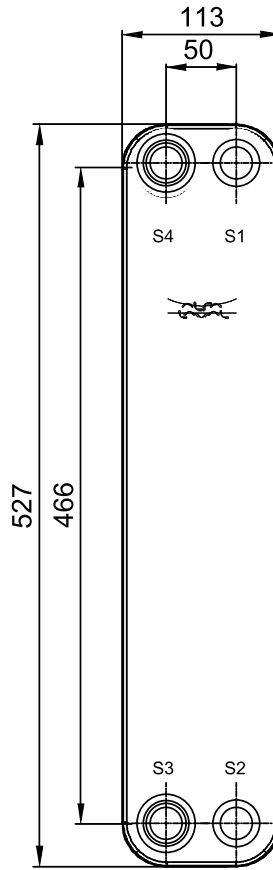
B 21
ALLOY 304
S1,S2



H 21
ALLOY 304
S3,S4



Frameplate is depressed 2.1 mm at connections S3 and S4 if holed.
Pressureplate is depressed 2.1 mm at connections T3 and T4 if holed.



HEATING SURFACE m²
NETWEIGHT 12.8 kg
OPERATING WEIGHT kg
PLATE MATERIAL ALLOY 316
PLATE GROUPING 1*29H/1*30H

T1 T2 T3 T4 locations on back side correspond to S1 S2 S3 S4 on front side

ALL DIMENSIONS IN MILLIMETERS

SIDE	MEDIA	INLET	TEMP. °C	OUTLET	TEMP. °C	FLOW RATE	PRESSURE DROP	LIQUID VOL.
1	Water	S1	°C	S2	°C	kg/h	kPa	3.1 dm ³
2	Water	S3	°C	S4	°C	kg/h	kPa	3.0 dm ³

PRESSURE VESSEL APPROVAL

PED

CB60-60H-F (3287104973)

www.alfalaval.com

CUSTOMER NAME / REF. NO.

TOTAL LENGTH 193 mm
TOTAL WIDTH 113 mm
TOTAL HEIGHT 527 mm

COMPANY / REF.
EKO ELEKTROPRIGODNO DOBRO